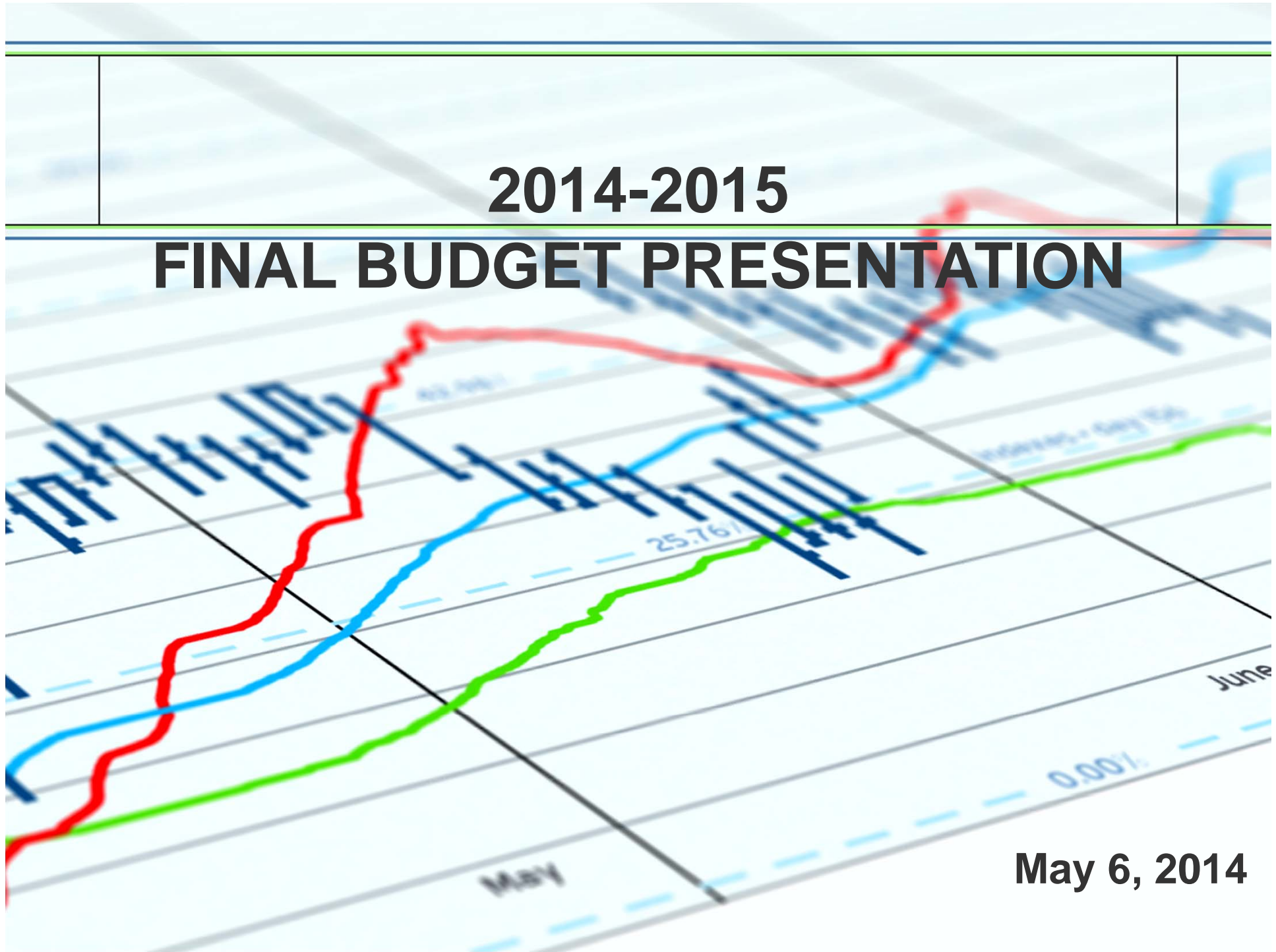


**2014-2015**

**FINAL BUDGET PRESENTATION**



**May 6, 2014**

# Franklin Township Board of Education

**Julia M. Presley, President**  
**Eva M. Nagy, Vice President**  
**Richard E. Arline**  
**Delvin Burton**  
**Christine Danielsen**  
**Nancy LaCorte**  
**Edward Potosnak III**  
**Keisha Smith-Carrington**  
**Betty Whalen**

**LeRoy Seitz, Interim Superintendent of Schools**  
**John Calavano, Assistant Superintendent for Business**

# Mission Statement

## Franklin Township Public Schools

*The Mission of the Franklin Township Public Schools is to provide excellent educational opportunities that meet or exceed New Jersey Core Curriculum Content Standards for every student; maintain an environment that engenders an appreciation of the value of every student; develop every student to his/her highest potential; and instill the attitudes, skills, and knowledge necessary to become independent, contributing members of a democratic, multi-cultural society.*

# District Goals

**CURRICULUM AND INSTRUCTION:** *To develop and implement a comprehensive assessment program designed to meet the needs of all students through the use of formative and summative assessments aligned to the common core standards and integrated into instruction.*

**COMMUNICATIONS AND PUBLIC ENGAGEMENT:** *To promote community engagement and effective communication to and from all stakeholders.*

**CULTURE AND CLIMATE:** *To continue the District's efforts to safeguard students and staff, enhance the culture and environment of our schools and improve relationships among and between students; staff; parents/guardians; and the community that promote respect, motivation for learning and creativity in and for our students.*

**FACILITIES:** *Utilizing the District's 2011-2021 Long-Range Facilities Plan, finalize a building program (including application for state grants and outside funding sources) that will enhance and improve the District's delivery of education to all students; provide additional classroom space to address the projected enrollment growth over the next several years; address critical maintenance issues in all existing facilities and consider potential changes to the delivery of education.*



# Budget Approval Process

- ❖ March 20 Preliminary Budget submitted to County (Option B – no outsourcing of substitute teachers)
- ❖ April 15 County approves the Preliminary Budget
- ❖ April 24 Board approves contract with Source4Teachers for substitute teacher staffing for the 2014-2015 school year
- ❖ May 6 Final Proposed Budget (with outsourcing of substitute teachers)

# Student Enrollment Growth

(as of October 15<sup>th</sup> of indicated school year)

2008	2009	2010	2011	2012	2013	2014 Projected
7,951	8,120	8,198	8,145	8,280	8,262	<b>8,431</b>

# Our Budget Will Maintain

- ❖ The Integrity of Our Instructional Programs
- ❖ Safety and Security
- ❖ Pre K Program
- ❖ Extra Curricular Activities
- ❖ Athletic Programs
- ❖ Fine, Visual and Performing Arts Programs
- ❖ Transportation

# Our Budget Will Also Support

- ❖ Program Expansion and Student Growth
  - ❖ General Education Teachers (2)
- ❖ Our Specialized Populations
  - ❖ Expansion of the Alternative Education Program Services
  - ❖ Additional Teachers:
    - ❖ Academic Intervention Services (1)
    - ❖ ESL/Bilingual (3)
    - ❖ Special Education (4)
- ❖ State Mandated Testing Requirements
  - ❖ PARCC Assessment Implementation



# Post Preliminary Budget Revisions

## Source of Funding for Revisions

- ❖ Outsourcing of Substitute Teachers
- ❖ Grant Management
- ❖ Salary Breakage

## Additions

- ❖ Increased Funding for PARCC Readiness
- ❖ Restoration of 6 Certificated Staff Members
- ❖ Restoration of Director of Personnel Position
- ❖ Restoration of Vehicle Maintenance
- ❖ A Part-Time Alternative Program Supervisor
- ❖ An Assistant Bowling Coach (FHS)

# Revenue for the 2014-15 Operating Budget

<b>Property Taxes</b>	<b>\$124,774,680</b>	<b>88.01%</b>
<b>State Aid</b>	<b>\$14,699,575</b>	<b>10.37%</b>
<b>Budgeted Fund Balance</b>	<b>\$2,000,000</b>	<b>1.41%</b>
<b>Interest &amp; Miscellaneous</b>	<b>\$294,286</b>	<b>.21%</b>
<b>Total Revenue</b>	<b>\$141,768,541</b>	<b>100.00%</b>

## 2014-2015 Operating Fund Expenditures

<b>Salaries and Benefits</b>	<b>\$93,618,936</b>	<b>66.04%</b>
<b>Special Education</b>	<b>\$17,632,628</b>	<b>12.44%</b>
<b>Transportation</b> (Excluding Special Education and Charter School)	<b>\$ 9,502,500</b>	<b>6.70%</b>
<b>Operations / Maintenance</b>	<b>\$ 6,023,391</b>	<b>4.25%</b>
<b>Instruction and Support</b>	<b>\$ 8,078,488</b>	<b>5.69%</b>
<b>Charter School</b>	<b>\$ 6,564,621</b>	<b>4.63%</b>
<b>Capital Outlay</b>	<b>\$ 347,977</b>	<b>.25%</b>
<b>TOTAL</b>	<b>\$141,768,541</b>	

# Total Tax Levy 2014-2015

<b>General Fund</b>	<b>\$124,774,680</b>
<b>Debt Service Fund</b>	<b>\$ 4,626,751</b>
<b>Total</b>	<b>\$129,401,431</b>



# Franklin Township School Taxes

## Calendar Year 2014

January → June

July → December

2013-2014 School Budget  
Tax Levy

$\$127,153,050 \div 2 =$   
 $\$63,576,525$

2014-2015 School Budget  
Tax Levy

$\$129,401,431 \div 2 =$   
 $\$64,700,715.50$

Tax Rate on BOE Worksheet = Tax Rate on Tax Bill

<b>½ of Current Budget Levy</b>	<b>\$ 63,576,525.00</b>
<b>+ ½ of Proposed Budget Levy</b>	<b>\$ 64,700,715.50</b>
<b>= Calendar Year 2014 Tax Levy</b>	<b>\$128,277,240.50</b>

# Tax Impact of 2014-2015 Budget

	School Year 2013-2014 Tax Year 2013	School Year 2014-2015 Tax Year 2014	\$ Difference	% Difference
School Fiscal Year Tax Levy (July - June)	\$127,153,050	\$129,401,431	\$2,248,381	1.77%
Calendar Year Tax Levy (Jan. - Dec.)	\$125,997,972	\$128,277,241	\$2,279,269	1.81%
Assessed Valuations	\$8,868,781,644	\$8,938,183,250	\$69,401,606	0.78%
Tax Rate	0.01421	0.01435	0.00014	0.99%
Rate per \$100 Rounded 3 Decimal	\$1.421	\$1.435	\$0.014	0.99%

# Impact on Average Assessed Home

(Based on 2014 Assessments)

2013 Average Assessment	2013 Taxes	2014 Average Assessment	2014 Taxes	\$ Difference	% Difference
\$304,258	\$4,323.51	\$306,058	\$4,391.93	\$68.42	1.58%

**Annual Tax Increase of  
\$68.42 per Average  
Household**



# Post Preliminary Budget Revisions

## Source of Funding for Revisions

- ❖ Outsourcing of Substitute Teachers
- ❖ Grant Management
- ❖ Salary Breakage

## Additions

- ❖ Increased Funding for PARCC Readiness
- ❖ Restoration of 6 Certificated Staff Members
- ❖ Restoration of Director of Personnel Position
- ❖ Restoration of Vehicle Maintenance
- ❖ A Part-Time Alternative Program Supervisor
- ❖ An Assistant Bowling Coach (FHS)